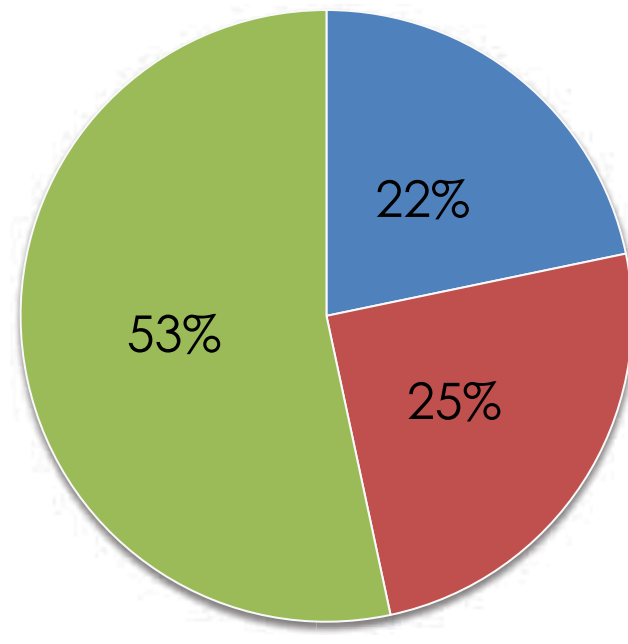


Appropriate Amenities pt. 1

Appropriate Types of Housing in Bloomfield

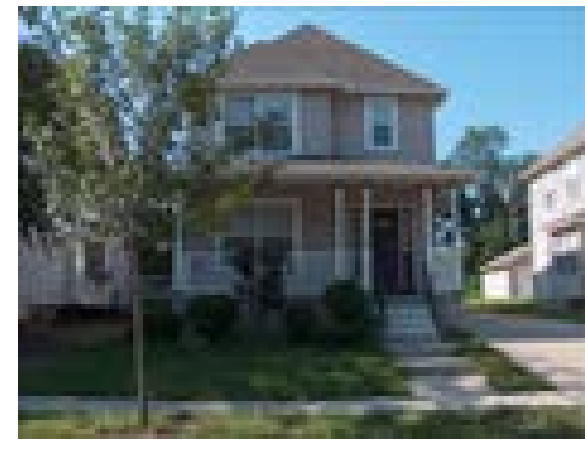
• The question posed in the survey was what type of housing would be appropriate for Bloomfield? The three options presented were apartment complex, townhome, and single-family.
 • From the data collected, single-family housing was the most popular choice, townhomes were second, and apartment complexes were third.
 • This data helped the team think about what appropriate housing would be suitable in areas when creating ideas and plans.



Apartment Complex



Townhomes



Single-Family

Appropriate Dining Types in Bloomfield



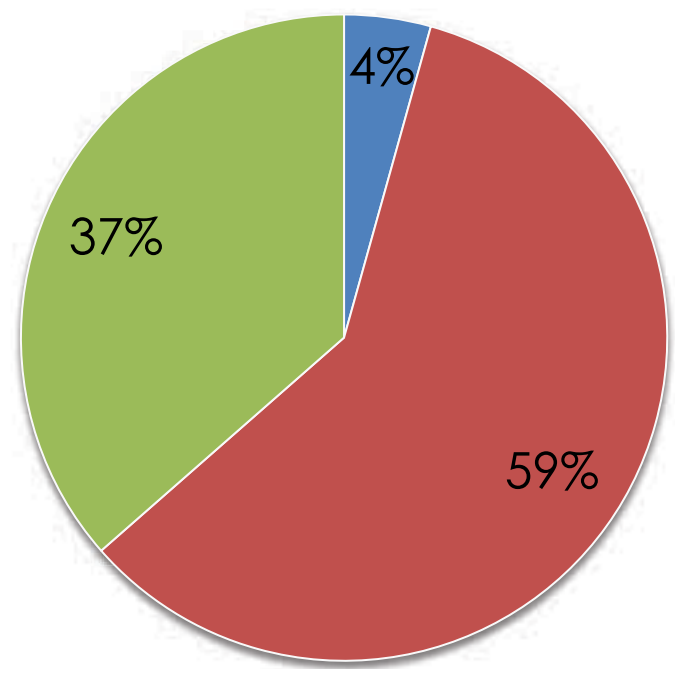
Food Court



Indoor Restaurant



Outdoor Restaurant



• The question posed in the survey was what type of dining would be appropriate for Bloomfield? The three options presented were food court, indoor, and outdoor restaurant.
 • From data collected, indoor restaurant was the most popular choice, outdoor restaurant was second, and food court was third.
 • This data helped the team think about what would be drawn and added in the updates of facades of buildings in downtown and areas around Bloomfield when concerned with dining options.

Appropriate Retail for Bloomfield



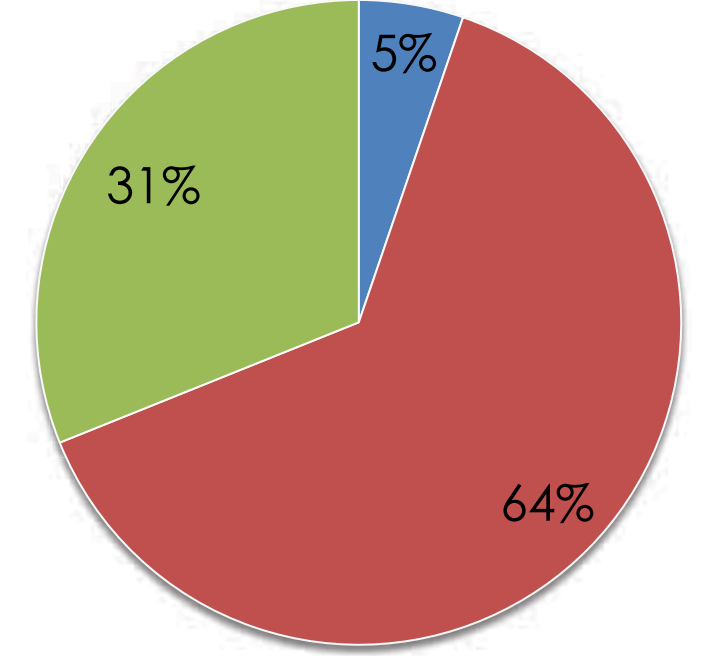
Indoor Mall



Commercial Street

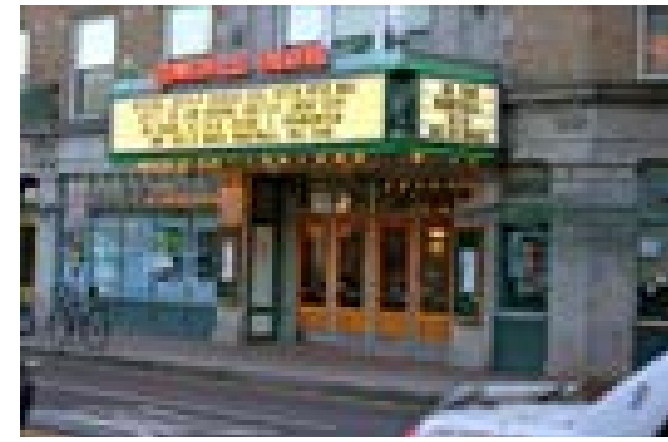
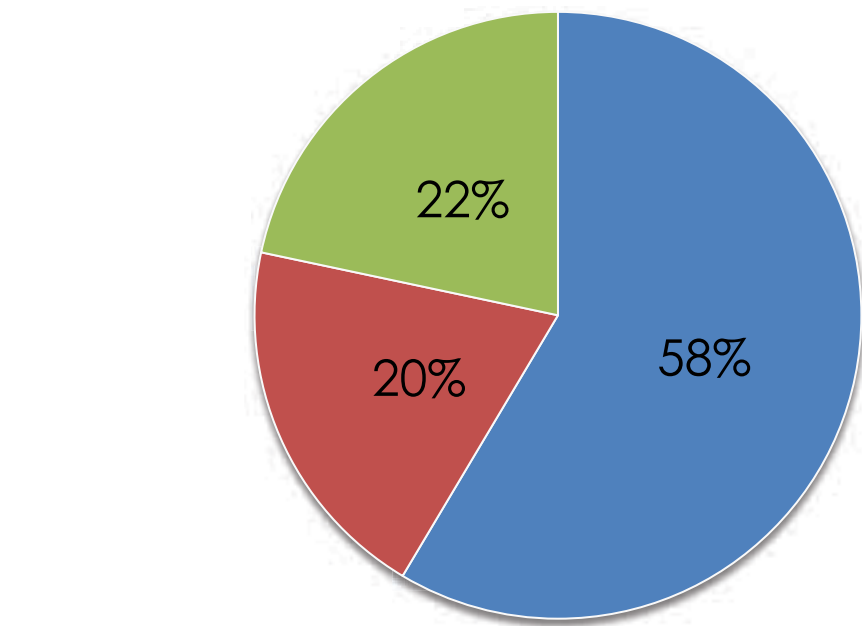


Outdoor Market



• The question posed in the survey was what type of retail would be appropriate for Bloomfield? The three options presented were indoor mall, commercial street, and outdoor market.
 • From data collected, commercial street was the most popular choice, outdoor market was second, and indoor mall was third.
 • This data helped the team think about what appropriate retail shops would be added to the overall plan and portrayed through drawings.

Appropriate Entertainment for Bloomfield



Theater



Art Gallery/ Museum



Nightlife

• The question posed in the survey was what type of entertainment would be appropriate for Bloomfield? The three options presented were a theater, an art gallery/ museum, and a nightlife.
 • From data collected, a theater was the most popular choice, nightlife was second, and an art gallery/ museum was third.
 • This data helped the team think about what should be placed in infill areas in the downtown and around Bloomfield and how to draw people to certain areas.

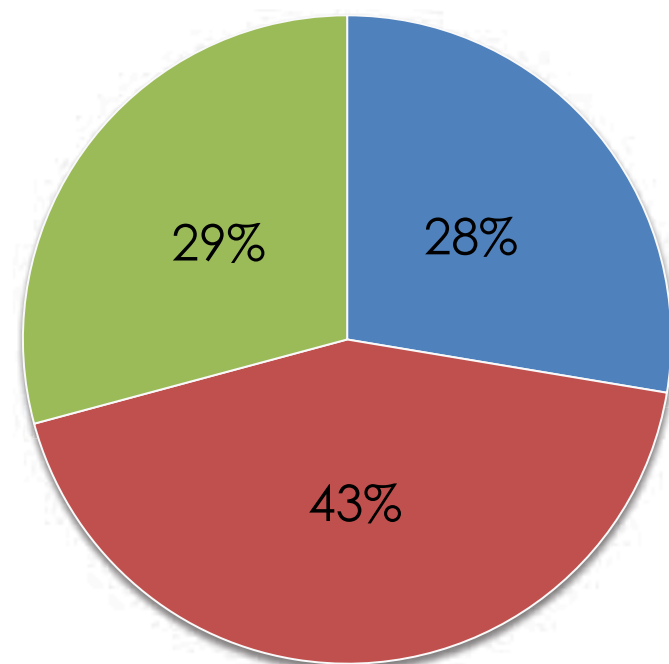
IMAGINE BLOOMFIELD • IMAGINE BLOOMFIELD • IMAGINE BLOOMFIELD • IMAGINE BLOOMFIELD • IMAGINE BLOOMFIELD • IMAGINE BLOOMFIELD • SURVEY RESULTS • SURVEY RESULTS • SURVEY RESULTS • SURVEY RESULTS • SURVEY RESULTS • SURVEY RESULTS • SURVEY RESULTS • SURVEY RESULTS • SURVEY RESULTS • SURVEY RESULTS • SURVEY RESULTS • SURVEY RESULTS • SURVEY RESULTS • SURVEY RESULTS

survey results

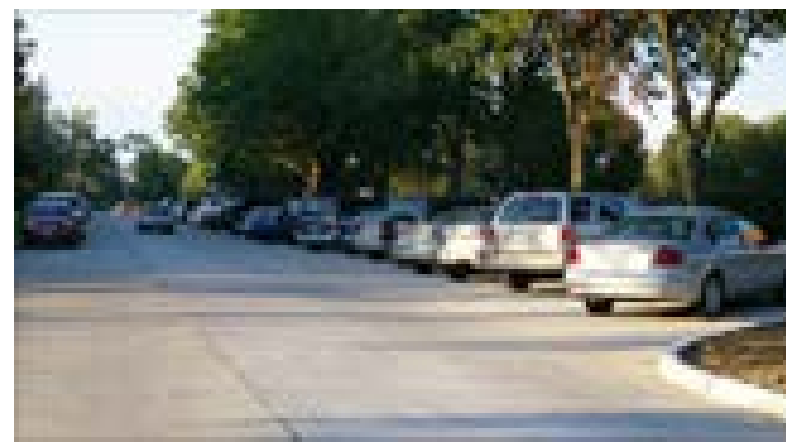
Appropriate Amenities pt. 2

Appropriate Types of Parking for Bloomfield

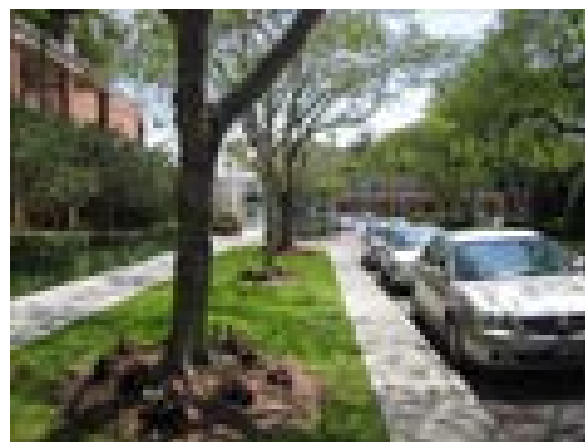
• The question posed in the survey was what type of parking would be appropriate for Bloomfield? The three options presented were parking lots, diagonal on-street parking, and parallel on-street parking.
 • From data collected, diagonal on-street parking was the most popular choice, parallel on-street parking was second, and parking lot was third.
 • This data helped the team portray this type of parking in the various drawings and comprehensive plans in the study areas.



Parking Lot



Diagonal On-Street Parking



Parallel On-Street Parking

Favored Street Amenities throughout Bloomfield



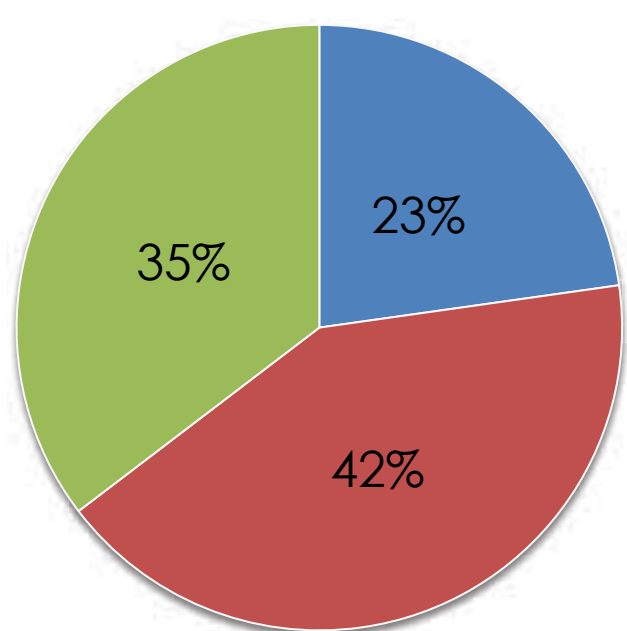
Bike Lanes



Widened Sidewalks



Crosswalks



• The question posed in the survey was what type of street amenities would be appropriate for Bloomfield? The three options presented were bike lanes, widened sidewalks, and crosswalks.
 • From data collected, widened sidewalks was the most popular choice, crosswalks was second, and bike lanes was third.
 • This data helped the team generate ideas for the three study areas and to create better circulation in the areas.

Appropriate Public Transportation Options for Bloomfield



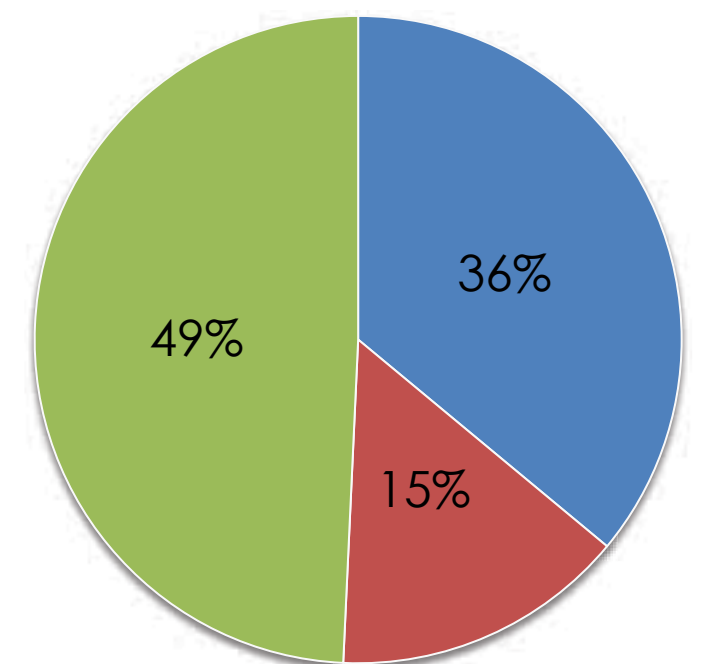
Bus



Streetcar

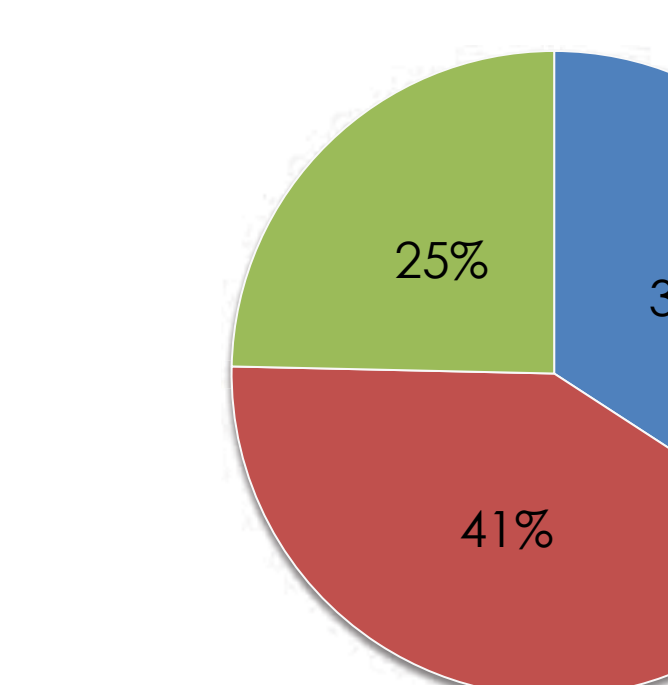


Bike Rental



• The question posed in the survey was what type of public transportation would be appropriate for Bloomfield? The three options presented were buses, streetcars, and bike rentals.
 • From data collected, bike rental was the most popular choice, a public bus system was second, and a streetcar was third.
 • This data helped the team add in these options into the overall plan and drawings for the three study areas.

Appropriate Sustainable Initiatives for Bloomfield



Recycling



Local Food



Energy Conservation

• The question posed in the survey was what sustainable initiatives would be appropriate for Bloomfield? The three options presented were recycling, local foods, and energy conservation.
 • From data collected, local foods was the most popular choice, recycling was second, and energy conservation was third.
 • This data helped the team when thinking about how new buildings would be constructed, and how to make Bloomfield more green and self-sufficient.

